



# INDOFINE Chemical Company, Inc.

121 Stryker Lane, Bldg. 30, Suite 1 • Hillsborough, NJ 08844 • U.S.A.

Phone: (908) 359-6778 • FAX: (908) 359-1179

website: [www.indofinechemical.com](http://www.indofinechemical.com)

e-mail: [chemical@indofinechemical.com](mailto:chemical@indofinechemical.com)

## CERTIFICATE OF ANALYSIS

Catalog Number: 06-313

Product Name:  **$\beta$ -FEBRIFUGINE**

CAS Number: [24159-07-7]

Lot Number: 1511699

Chemical Formula: C<sub>16</sub>H<sub>19</sub>N<sub>3</sub>O<sub>3</sub>

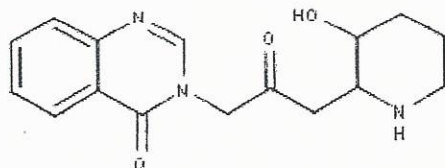
Molecular Weight: 301.34

Appearance: White powder

Loss on Drying: 1.1%

Storage: Store in a cool, dry place. Protect from light.

Purity(HPLC): 99.63%





# INDOFINE Chemical Company, Inc.

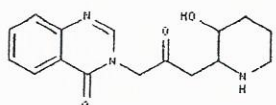
121 Stryker Lane, Bldg. 30, Suite 1 • Hillsborough, NJ 08844 • U.S.A.

Phone: (908) 359-6778 • FAX: (908) 359-1179

website: [www.indofinechemical.com](http://www.indofinechemical.com)

e-mail: [chemical@indofinechemical.com](mailto:chemical@indofinechemical.com)

## HPLC ANALYSIS

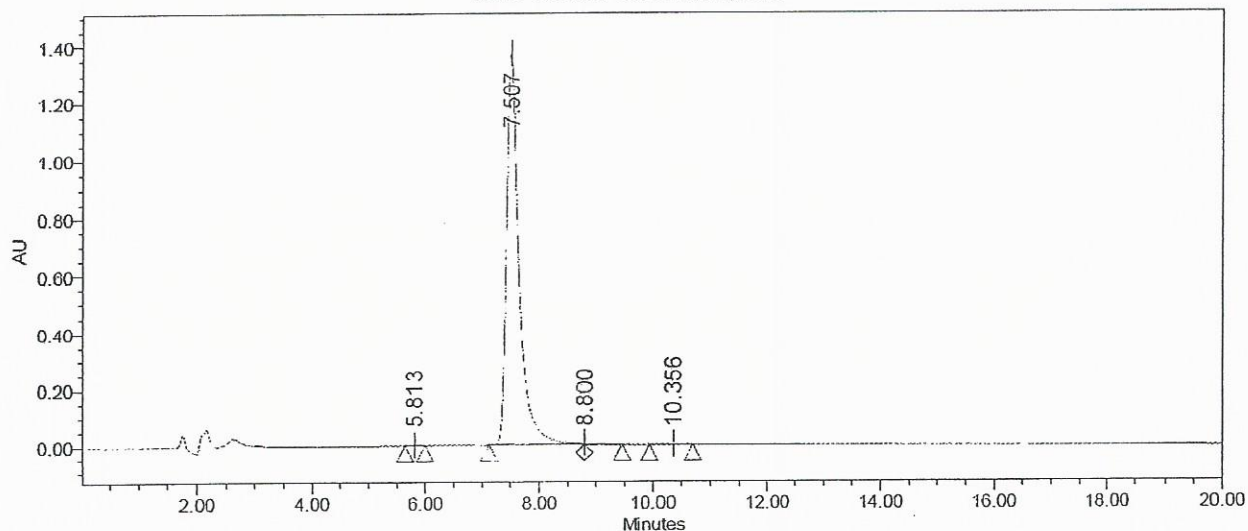


Catalog No.: 06-313  
Product Name:  $\beta$ -Febrifugine  
Lot No.: 1511699

### SAMPLE INFORMATION

Sample Name:	$\beta$ Febrifugine	Acquired By:	System
Sample Type:	Unknown	Sample Set Name:	
Vial:	72	Acq. Method Set:	$\beta$ Febrifugine
Injection #:	1	Processing Method:	Samples
Injection Volume:	5.00 ul	Channel Name:	225.0nm
Run Time:	20.0 Minutes	Proc. Chnl. Descr.:	PDA 225.0 nm

Auto-Scaled Chromatogram



### Peak Results

Name	RT	Area	% Area	USP Plate Count	USP Resolution
1	5.813	13350	0.06	7030.75	
2	7.507	20828844	99.63	6635.35	5.08
3	8.800	55687	0.27		3.35
4	10.356	8742	0.04	11696.63	4.23